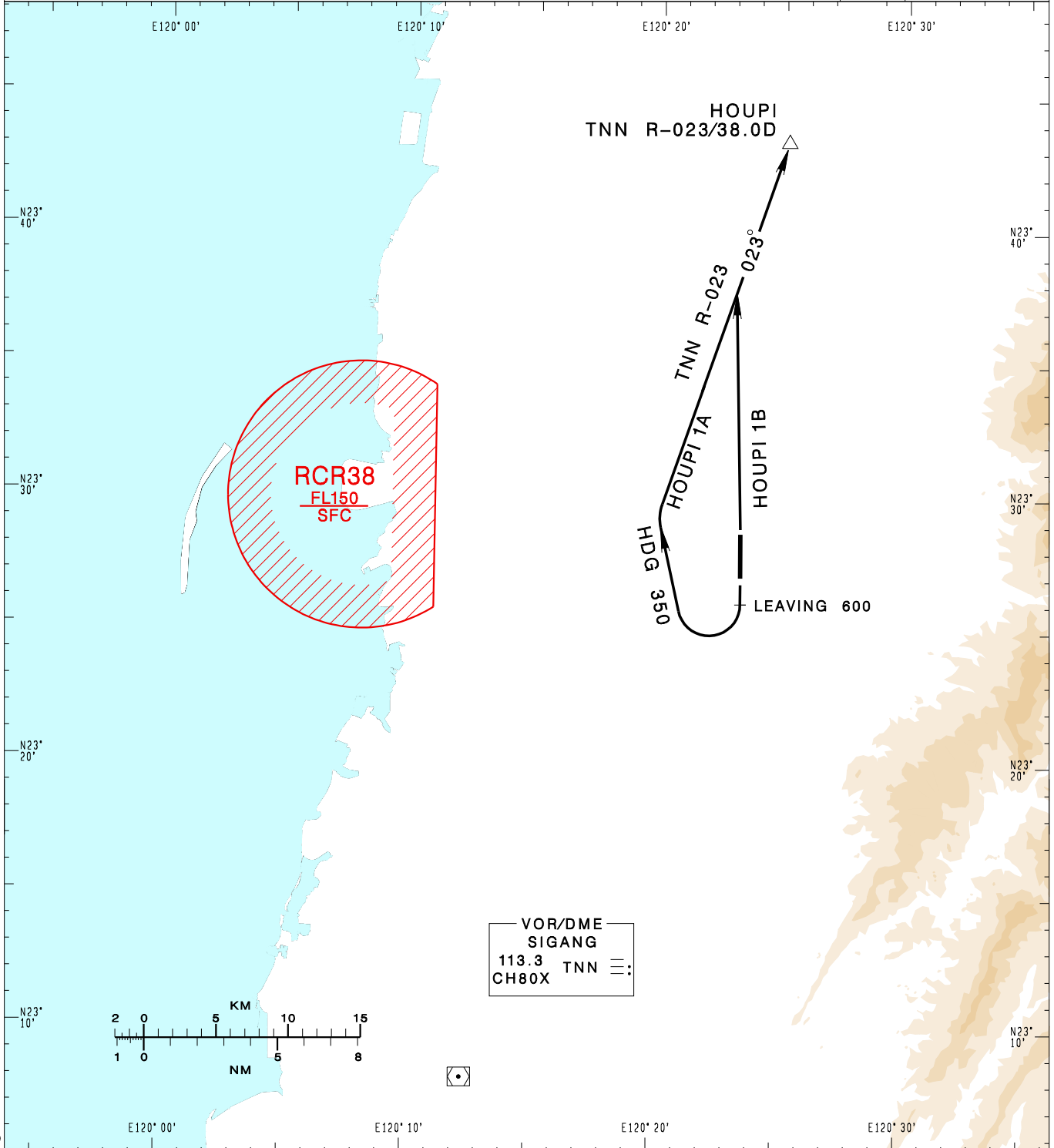


嘉義機場
CHIAYI AD

RCKU SID
HOUPI 1A(RWY 18)
HOUPI 1B(RWY 36)

KAOHSIUNG APP 120.6 301.0	CHIAYI TWR 118.6 236.6 275.8	VAR 4°W-2023 ↑	13600' MSA ARP 25NM
Apt Elev: 85'	Trans Level: FL130		
BEARINGS ARE MAGNETIC; DISTANCES ARE NAUTICAL MILES; ELEVATIONS, HEIGHTS IN FEET			



CHANGES: NEW PROC

HOUPI ONE ALFA DEPARTURE
Climb on RWY HDG until leaving 600ft, then
turn right HDG 350 to track TNN R-023 to HOUPI.

HOUPI ONE BRAVO DEPARTURE
Climb on RWY HDG to track TNN R-023 to HOUPI.

NOTE

- HOUPI 1A:
speed restriction of
210KT IAS maximum until 600ft
230KT IAS maximum until
established on track to HOUPI.
- ATS surveillance required.